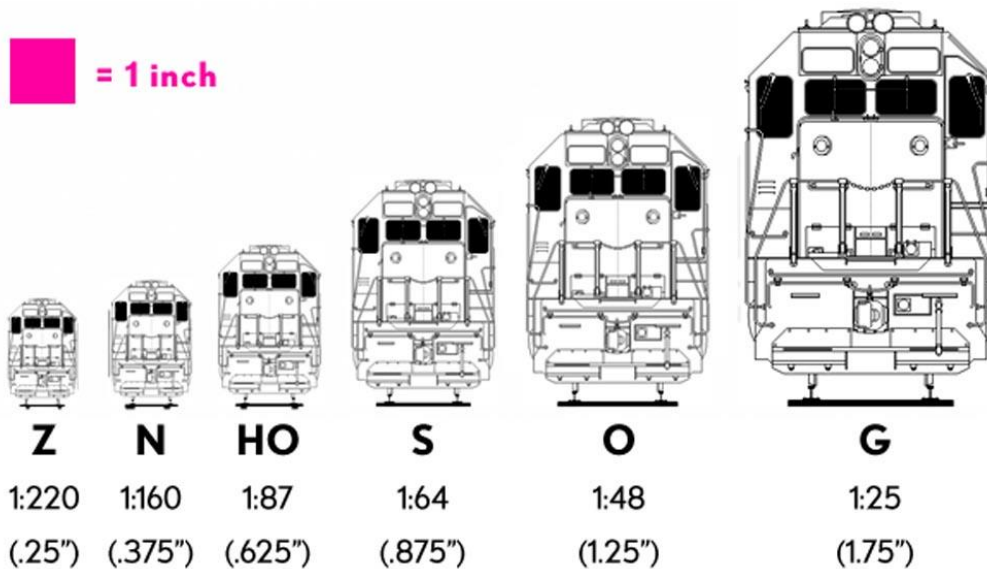
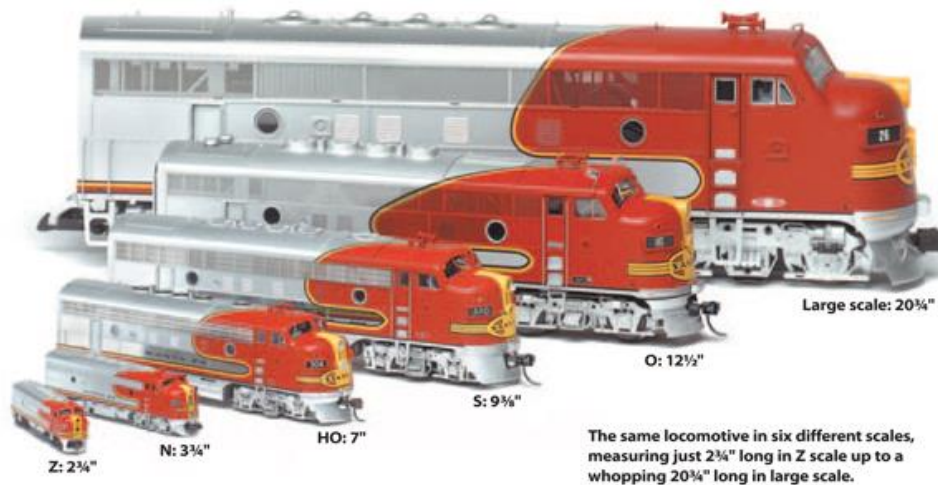


## Jägerndorfer and scale

Commonly people ask, what scale is this? Being that Jägerndorfer also makes HO scale model trains, and TrainLi the North American distributor, specializes in G scale, we identify and use model train scales.

To us, we understand the crazy letters, and what those numbers mean, and if you say something is say G scale, we have a pretty good idea what scale that is.

But, we also recognize that person setting up a Jägerndorfer tramway does not likely understand what HO scale is verses G scale. And that when I tell you that HO scale is Half the size of O scale, at 1:87 scale that likely is about as interesting as the reasons why airplanes leave vapor trails, and your eyes role back into your head.



## COMMON MODEL RAILROAD SCALES (AND GAUGES)

Oh gosh, more about the trains, but what size is the Jägerndorfer tramways.

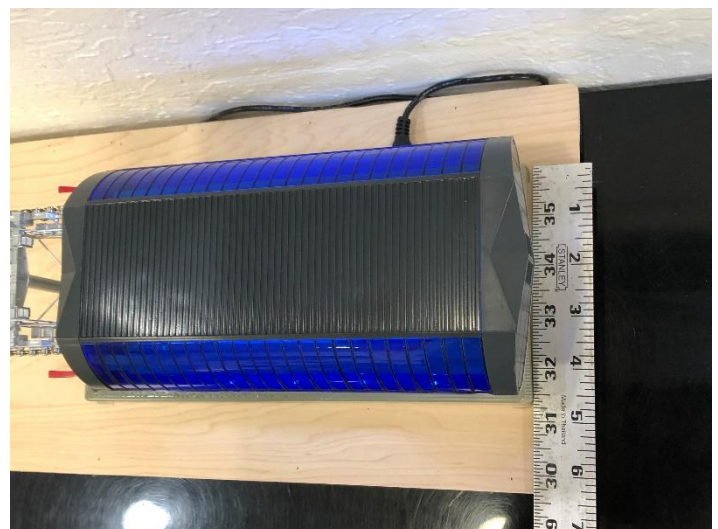
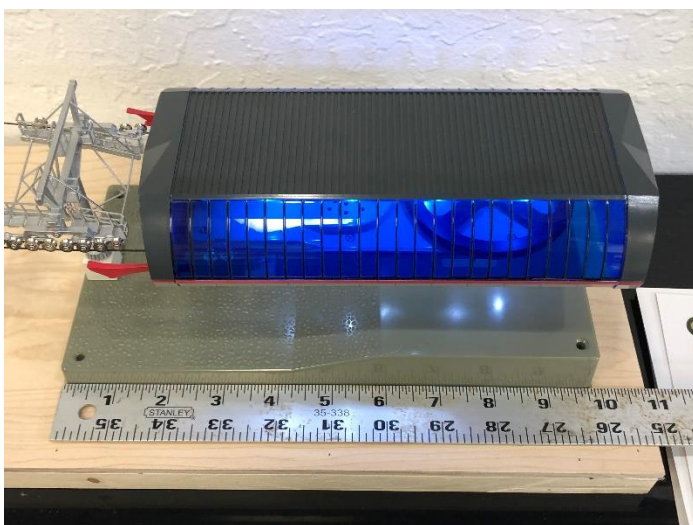
The little Jägerndorfer tramway, with its base station and mountain station is 1:87 or simply HO – when you look at the pictures, that’s relatively small: that means that it’s 87 times smaller than the real life version.

Let me help, here’s an HO tramway that I setup, on a 4’ long board.



That’s a yardstick, in front of it on the table, next to an 8.5 x 11 sized document. See the gondolas? This display would look great, in a box, with a scene behind it on a table, or within an HO scale train layout. However, it can easily disappear when comparing it to the television.

But wait, that doesn’t answer how big the base station it’s small at about 10.5” x 4.5”



Ok, the next size up, the large-scale version – it's technically 1:32 scale, this scale is often thought of a G scale. But the railroading hobby gets more complicated and particular based upon the gauge of track. You see there is about 6 different scales that use the same gauge track, and generally the track gauge is simply considered Spur 1 or G scale.

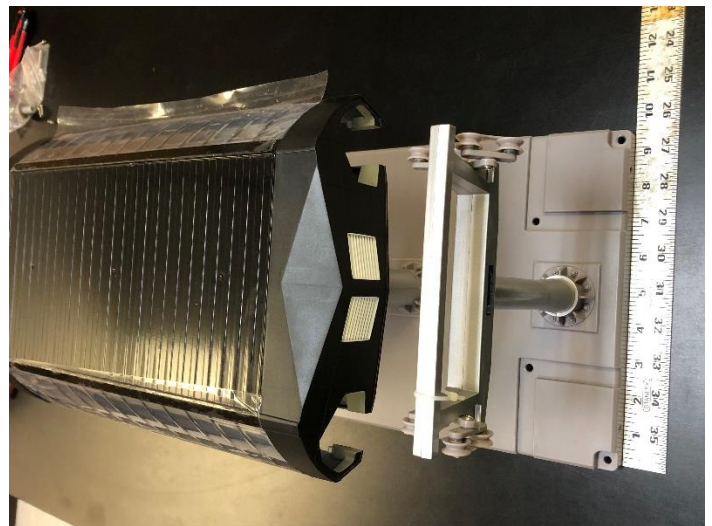
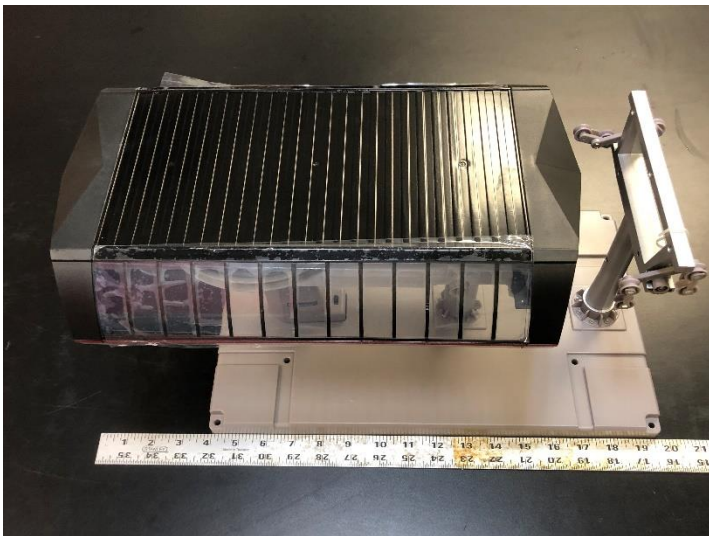
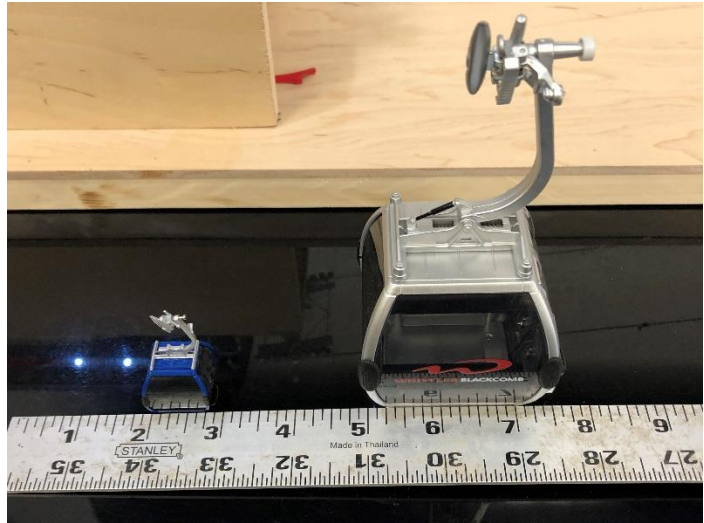
So, technically speaking, 1:32 scale is considered #1 Scale, however one scale runs on the same gauge track as G scale. Are you confused? That's ok, even a lot of model railroaders are, and they just call anything that runs on the same gauge track as G scale.

Just remember artistically speaking, it's all about the people and perspective, if the people fit through the door, or appear as if they do, then the scale is correct.

To help with showing the difference in size, here's a HO gondola next to a 1:32 or G scale Gondola

Again, notice the measurements of size against the yard stick

Oh I almost forgot, the base station measures 20" x 9.5", that is almost 3 times larger than HO Scale version.



And once again here's some photos of the G scale station next to a yard stick.

Finally, remember artistically speaking it's all about the people and perspective in this photo, everything is 1:32 scale except for the Gondola Keychain and The HO Gondola. If you note, the skier will fit comfortably into the chairs, the larger Gondola, the Tramway car and Piston bully, however he couldn't really think about getting into the HO Gondola or the Keychain



I hope this helps.